



FACT SHEET
(V5/15/25)

“Painting the Parks”
with Friends of Franklin Parks

November 6 – 9, 2025

EVENT PARTNER	Friends of Franklin Parks
EVENT NAME	<i>“Painting the Parks”</i>
EVENT DATES	<p>Open to the public: November 6 – 9, 2025</p> <p><i>Chestnut Member Preview (Family & Friends)</i> Wed, Nov. 5 4:00 – 5:00pm</p> <p><i>Opening Reception (Patron Event)</i> Wed, November 5 6:00 – 8:00pm (Invite only)</p> <p><i>Open to the Public:</i> Thursday, Nov 6: 9:00am – 4:00pm Friday, Nov 7: 9:00am – 9:00pm - Friday Night Art Crawl Sat, Nov 8: 9:00am – 4:00pm Sunday, Nov 9: 12:00 – 4:00pm</p>
KEY DATES & TIMES	<p>Title Blocks & Images deadline: Wed, October 29 by midnight</p> <p>Title Blocks: Submit on TCG website, HERE.</p> <p>Painting Drop-off: Monday, Nov 3: 12:00 – 4:00pm Tuesday, Nov 4: 9:00am – 11:00am</p> <p>Pick-up unsold paintings: Monday, Nov 10 – 9:00am – 12:30pm</p>
EVENT VENUE	<p>Hayes House at The Park at Harlinsdale Farm 331 Franklin Road Franklin, TN 37064</p> <p>Directions: click here</p>
EVENT CHAIRS	<p>Katherine Raymond, katherineraymondstudios@gmail.com (615) 708-5073 Lisa Fallon, margueritefallon@outlook.com, (806) 543-5444.</p>

PAINTING SUBJECT
MATTER,
GUIDELINES AND
RESTRICTIONS

Subject Matter/Restrictions

There are several Franklin Parks. For a full list, click [HERE](#).

These are highlighted parks that may be of more interest to painters:

HISTORIC SITE PARKS (Civil War)

***The Park at Harlinsdale Farm:** 331 Franklin Road, Franklin
(Historic Tennessee Walking Horse farm with Barns, Hayes House, pond, river, fields, dog park, horse shows, sunsets)

***Collins Farm:** 418 Lewisburg Pike, Franklin
(Historic home and garden)

***Carter Hill Park:** 1259 Columbia, Franklin
(Civil War memorabilia)

***Winstead Hill:** 4023 Columbia Pike, Franklin
(Civil War memorabilia, meadows, walking trails)

***Eastern Flank Battle Park:** 1343 Carnton Lane, Franklin
(Open spaces and walking trails)

***Fort Granger:** 105 Fort Granger Drive, Franklin
(National landmark site)

Additional parks of interest:

***Pinkerton Park:** 405 Murfreesboro Road, Franklin
(River and bridge)

***Bicentennial Park:** 400 5th Avenue N, Franklin
(River access)

***Dry Branch Storm Water Basin:** 7001 Moores Lane, Franklin
(Small wetland)

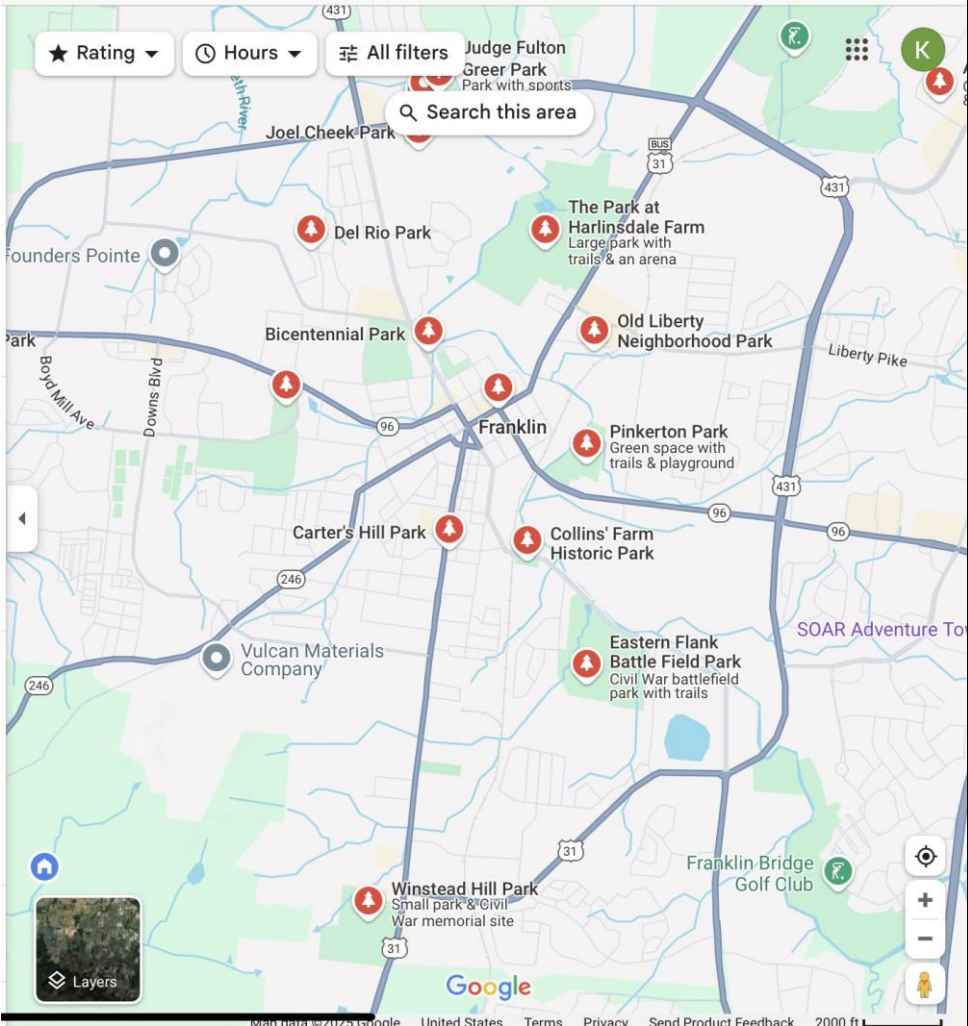
Please do not paint farm animals in the river. This is not sound, environmentally, as livestock pollutes the water.

And remember, when you go out to paint:

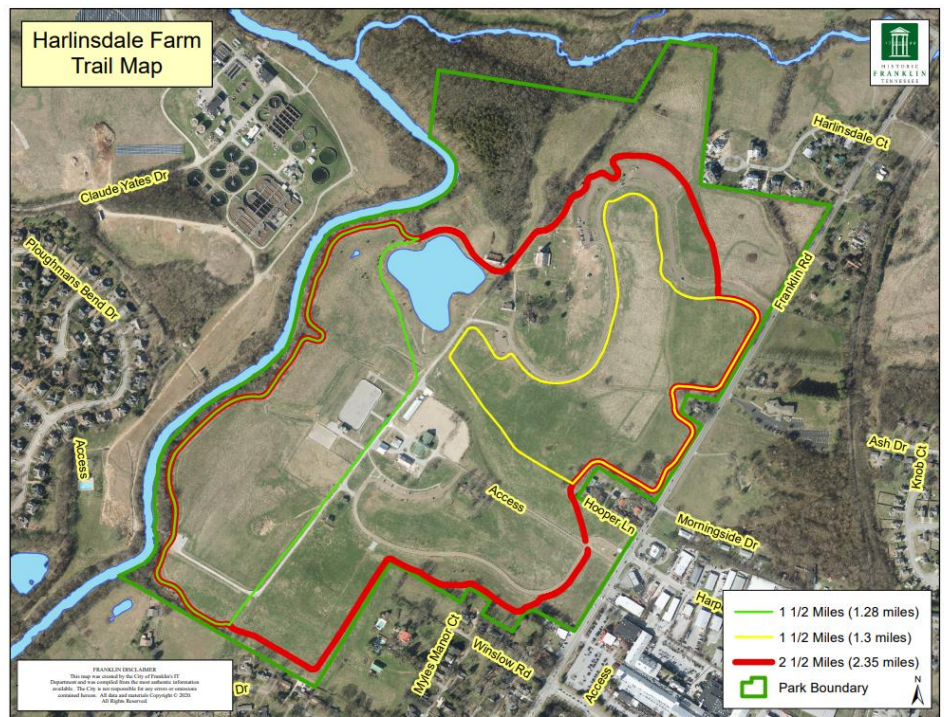
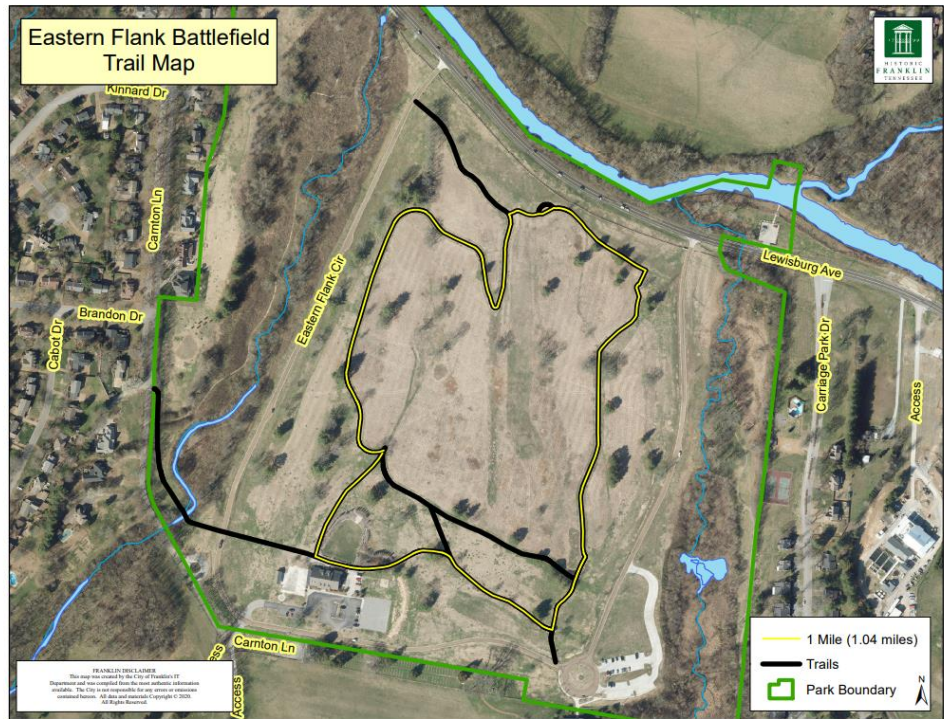
- Use the buddy system is the safest way to travel and paint!
- review and abide by our “Leave No Trace and Member Etiquette” guidelines. To view guidelines, visit [ChestnutGroup.org](#), login, select “Resources” then “Plein Air Artist Resources” then “Leave No Trace Guide” or, once you are logged in this link will take you directly to the [Leave No Trace Guide](#).
- Check out The Chestnut Group’s monthly newsletter for organized paint outs. The [Chestnut Group Members’ Facebook](#) page will also have last minute updates and is a good place to connect with other members to paint with.

PARKING	For the Show, available at Hayes House																				
PUBLIC RESTROOMS	Available in Hayes House																				
SPECIFICATIONS FOR SUBMITTING IMAGES OF YOUR WORK	<ul style="list-style-type: none">Email images of art as completed to Ellen Bibb at epbibb@me.com and Lolly Brown, chestnuts.marketing@gmail.comLabel images in jpg format as follows and no larger than 2MB:YourName_title_media_widthxheight.jpgExample - (BobRoss_flowers_oil_8x10.jpg)When posting your work to social media, please use hashtags: #thechestnutgroup #pleinair #fineart #Nashville #artist #painting #artwork #landscape #nature #beautiful #friendsoffranklinparks #paintingtheparks #Tennessee #conservation #preservation																				
PAINTING SUBMISSIONS Small = 6x6 up to but not including 8x10 (36 sq. in. to 79 sq. in.) Medium = 8x10 and up to and including 16x20 (80 sq. in. to 320 sq.in.) Large = larger than 16x20 up to max 30x40 (321 sq. in. to 1200 sq. in.)	<p>NUMBER AND SIZE OF PERMITTED PAINTINGS</p> <p><i>Each member is invited to show 5 paintings, plus an unlimited number of 100% donated paintings.</i></p> <p>5 paintings—Member keeps 45% of sales price, 40% to Friends of Franklin Parks, 15% Chestnut Group.</p> <p>100% donated paintings—sales price splits 50/50 Franklin Parks/ Chestnut Group</p> <p>Due to space limitations, sizes may be as follows . . .</p> <p>For 5 entries:</p> <table><tr><td><i>Example A:</i></td><td><i>Example B:</i></td><td><i>Example C:</i></td></tr><tr><td>• 1 painting – Small</td><td>• 1 painting – Small or large</td><td>• 5 paintings – Medium</td></tr><tr><td>• 1 painting – Large</td><td>• 4 paintings – Medium</td><td></td></tr><tr><td>• 3 paintings – Medium</td><td></td><td></td></tr></table> <p>For 4 entries when submitting 2 large:</p> <table><tr><td><i>Example A:</i></td><td><i>Example B:</i></td></tr><tr><td>• 1 painting – Small</td><td>• 2 paintings – Medium</td></tr><tr><td>• 1 painting – Medium</td><td>• 2 paintings – Large</td></tr><tr><td>• 2 paintings – Large</td><td></td></tr></table> <p>NOTES:</p> <ul style="list-style-type: none">Large paintings (those larger than 16x20 and up to 30x40) may require display easels with dedicated lighting.Please refrain from using heavy frames on larger painting sizes within the Medium size category (e.g., 12x16, 14x18, and 16x20). Our 3-panel display systems were not designed to support exceptionally heavy paintings.	<i>Example A:</i>	<i>Example B:</i>	<i>Example C:</i>	• 1 painting – Small	• 1 painting – Small or large	• 5 paintings – Medium	• 1 painting – Large	• 4 paintings – Medium		• 3 paintings – Medium			<i>Example A:</i>	<i>Example B:</i>	• 1 painting – Small	• 2 paintings – Medium	• 1 painting – Medium	• 2 paintings – Large	• 2 paintings – Large	
<i>Example A:</i>	<i>Example B:</i>	<i>Example C:</i>																			
• 1 painting – Small	• 1 painting – Small or large	• 5 paintings – Medium																			
• 1 painting – Large	• 4 paintings – Medium																				
• 3 paintings – Medium																					
<i>Example A:</i>	<i>Example B:</i>																				
• 1 painting – Small	• 2 paintings – Medium																				
• 1 painting – Medium	• 2 paintings – Large																				
• 2 paintings – Large																					

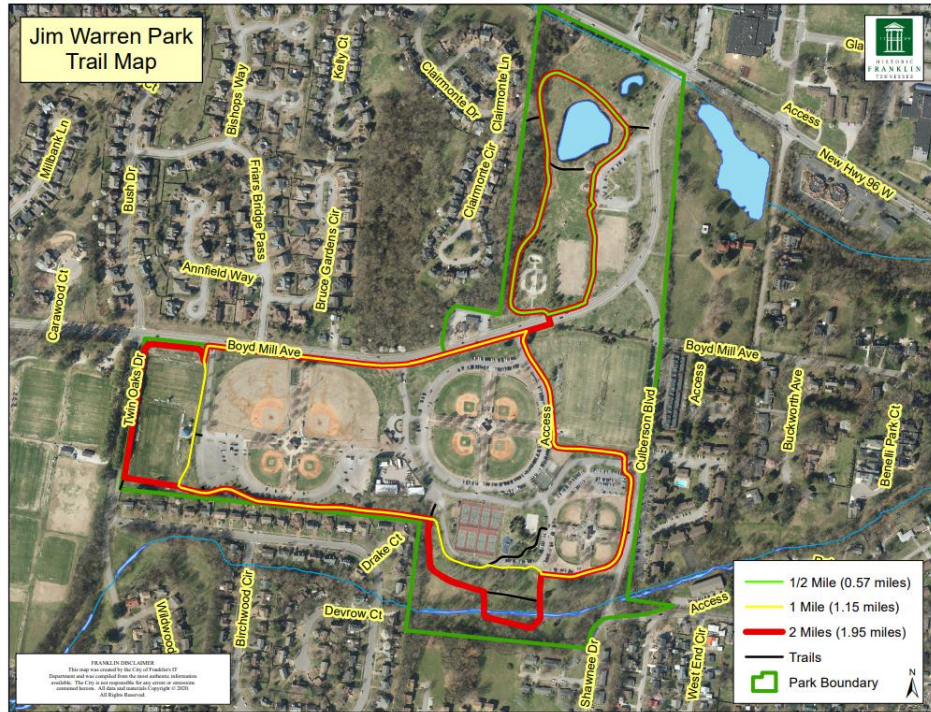
FRAMING GUIDELINES	<p>Acceptable</p> <ul style="list-style-type: none"> · Solid Wood Construction · Gold, silver, bronze, black, brown, and single tone-stained wood frames, with or without gold or silver trim liner lips. Since we are a plein air painting organization, plein air style frames are recommended, but not required (search plein air frames and click images for examples). · Plein air styled floater frames with a painted exposed edge of the panel or canvas. · Tasteful, subdued, color-painted frames, for example: white, off-white, pale green, antiqued gray or blue, etc. · All works on paper must be protected under glass or plexi-glass. White or off-white mats are recommended. <p>NOT Acceptable</p> <ul style="list-style-type: none"> · Plastic wood-like frames. · Roughly distressed wood frames. · Low-quality or damaged frames. · Picture frames with an attached fold-out easel. · Unframed, gallery-wrapped canvases. • <i>Paper mats must be framed under glass.</i>
PRICING OF WORKS	<p>A minimum price of \$250.00 has been established for this show. Any work submitted below that price will automatically be adjusted to the minimum price of \$250.00</p> <ul style="list-style-type: none"> · If you have questions on how to price your work, visit ChestnutGroup.org, login, select “Resources”, “Guide to Participating in Exhibitions and Shows” and then “Pricing Guide” or, once you are logged in this link will take you directly to the pricing guide.
TITLE BLOCK DEADLINE	<p>The Title Block deadline is Wed, Oct 29th by MIDNIGHT, visit ChestnutGroup.org, login, select “Members” and then “Title Block Submission” or, once you are logged in this link will take you directly to the title block submission: SubmitYourTitleBlock</p>
BEFORE DROP OFF HANG TAGS	<p>Two Hanging Tags must be filled out for each painting prior to drop off. One taped securely to the back of the painting and one taped to a 6” ribbon tied to the hanging wire so that the tag can be flipped to drape over the front of the painting. To access the Hang Tag form, visit ChestnutGroup.org, login, select “Resources”, “Guide to Participating in Exhibitions and Shows” and then “Hang Tag Form Download” or, once you are logged in this link will take you directly to the Hang Tag Form.</p>
DROP OFF/PICK UP	<p>Painting Drop-off: Monday, Nov 3: 12:00 – 4:00pm Tuesday, Nov 4: 9:00 – 11:00am</p> <p>Pick-up unsold paintings: Monday, Nov 10 – 9:00am – 12:30pm</p>
CURRENT MEMBERSHIP	<p>Membership dues must be current to participate in The Chestnut Group, organized paint outs, functions, and exhibit events.</p>

VOLUNTEERS	<p>The Chestnut Group is a volunteer-based organization. Volunteers are essential to our success and make these events possible. If you would like to organize and host a Franklin Parks paint out, or volunteer to help with this event, please contact one of the chairs above.</p> <p><i>Volunteer Sign-up – (A signup genius form is coming soon)</i></p>
NOTES	<p>Marketing & Operations Manager for The Chestnut Group – Lolly Brown, chestnuts.marketing@gmail.com, (615) 300-7313</p>
QUESTIONS	<p>Katherine Raymond, katherineraymondstudios@gmail.com (615) 708-5073 Lisa Fallon, margueritefallon@outlook.com, (806) 543-5444.</p>
LINKS TO PARKING	
MAPS	<p>Franklin Parks webpage: CLICK HERE.</p>  <p>SCROLL DOWN FOR MORE MAPS OR CLICK HERE</p>





Jim Warren Park Trail Map



Liberty Park Trail Map



